

# PROJECT WICHITA

## Strategic Items

### Survey responses ranked by “Essential” and “Very Important” investment

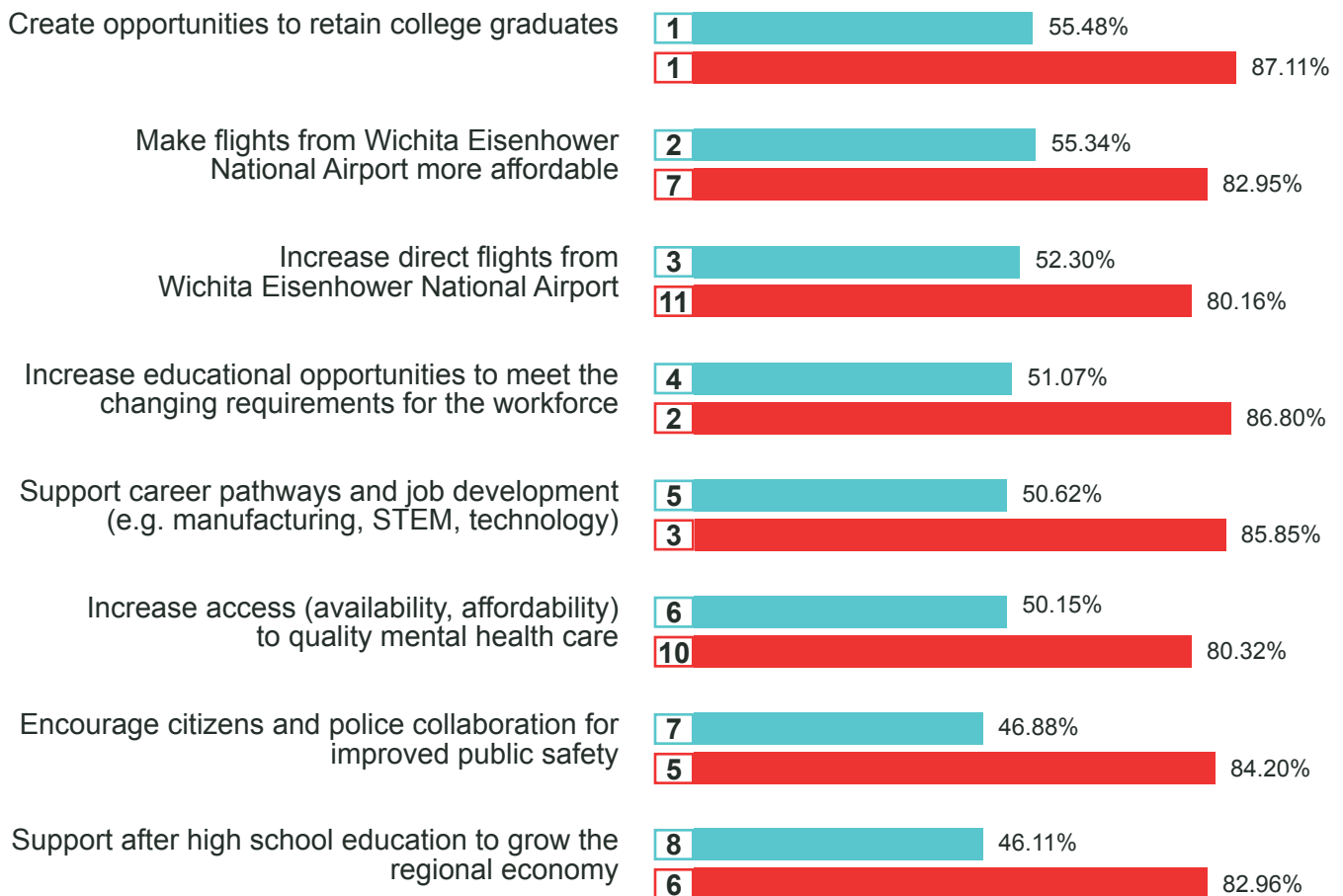
The following information provides two sets of data: 1) Ranking of each item by “essential” investment ranking (the highest level of support); and 2) Ranking of each item by the combined “essential” and “very important” investment rankings. **Items are ranked in order by “essential” investment percentages.**

#### Ranked Strategic Items Key

■ “Essential” Investment Responses ■ “Essential” Investment + “Very Important” Investment Responses (Combined)

“Essential” Investment Ranking — # % of respondents

“Essential” & “Very Important” Investment Ranking (Combined) — # % of respondents



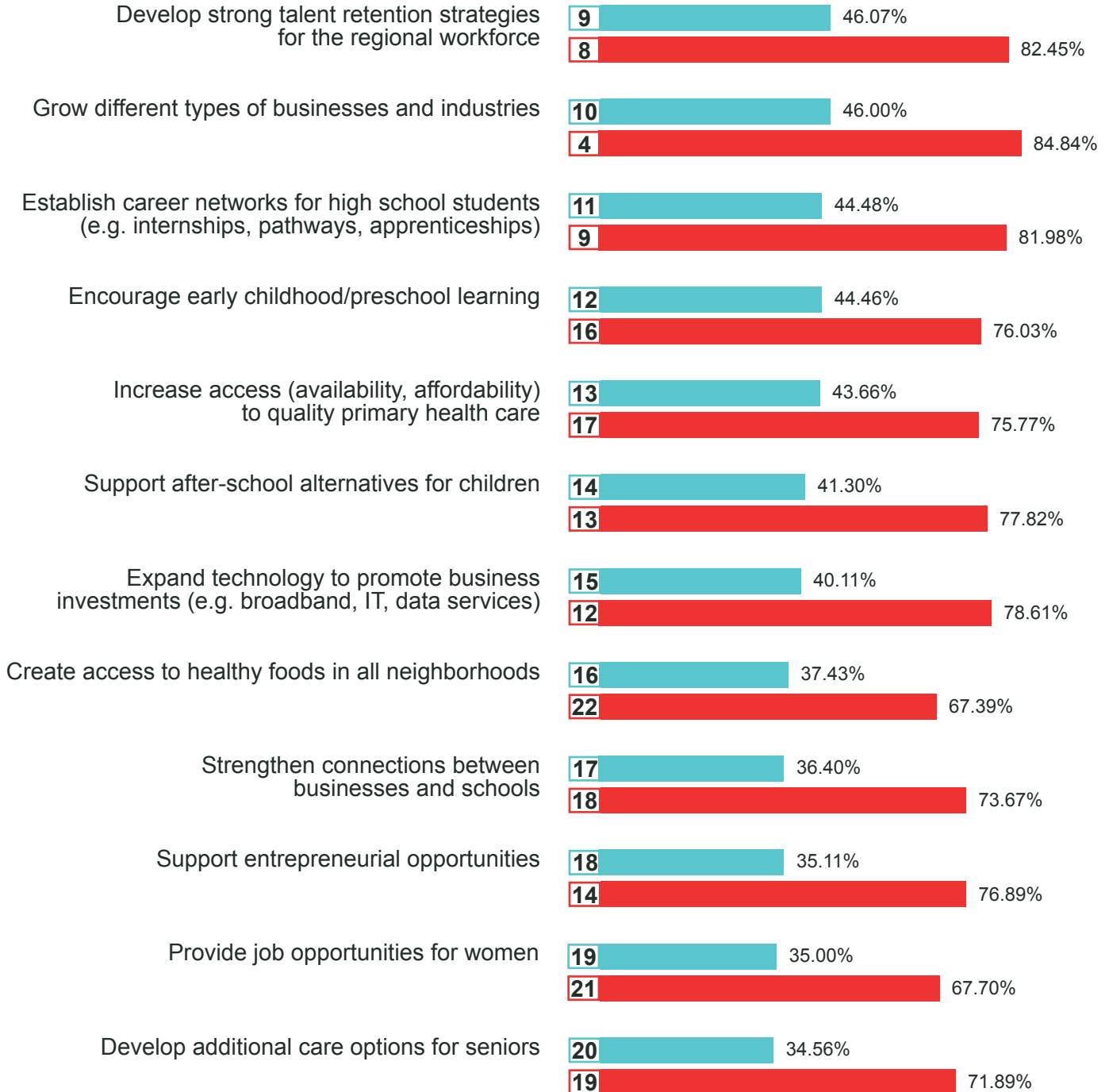
*This data was gathered in a community survey developed by the WSU Public Policy and Management Center in Spring 2018. It represents information and feedback from nearly 14,000 individuals in the Wichita region. The purpose of the survey is to provide community feedback for the creation of a vision and action plan to help the Wichita region thrive.*

## Ranked Strategic Items Key

■ "Essential" Investment Responses ■ "Essential" Investment + "Very Important" Investment Responses (Combined)

"Essential" Investment Ranking — # % of respondents

"Essential" & "Very Important" Investment Ranking (Combined) — # % of respondents



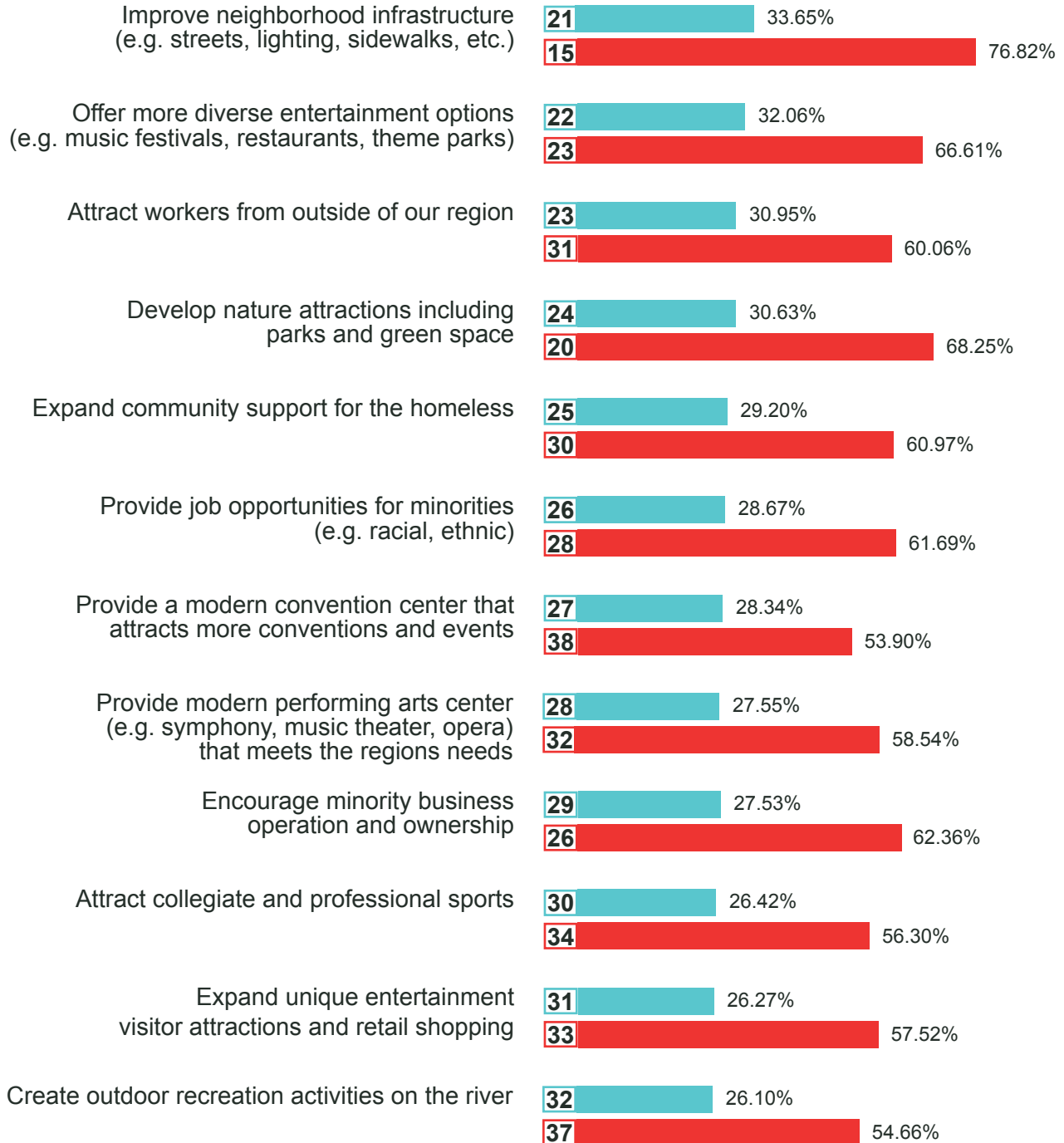
*This data was gathered in a community survey developed by the WSU Public Policy and Management Center in Spring 2018. It represents information and feedback from nearly 14,000 individuals in the Wichita region. The purpose of the survey is to provide community feedback for the creation of a vision and action plan to help the Wichita region thrive.*

## Ranked Strategic Items Key

■ "Essential" Investment Responses   ■ "Essential" Investment + "Very Important" Investment Responses (Combined)

"Essential" Investment Ranking — # [bar] % of respondents

"Essential" & "Very Important" Investment Ranking (Combined) — # [bar] % of respondents

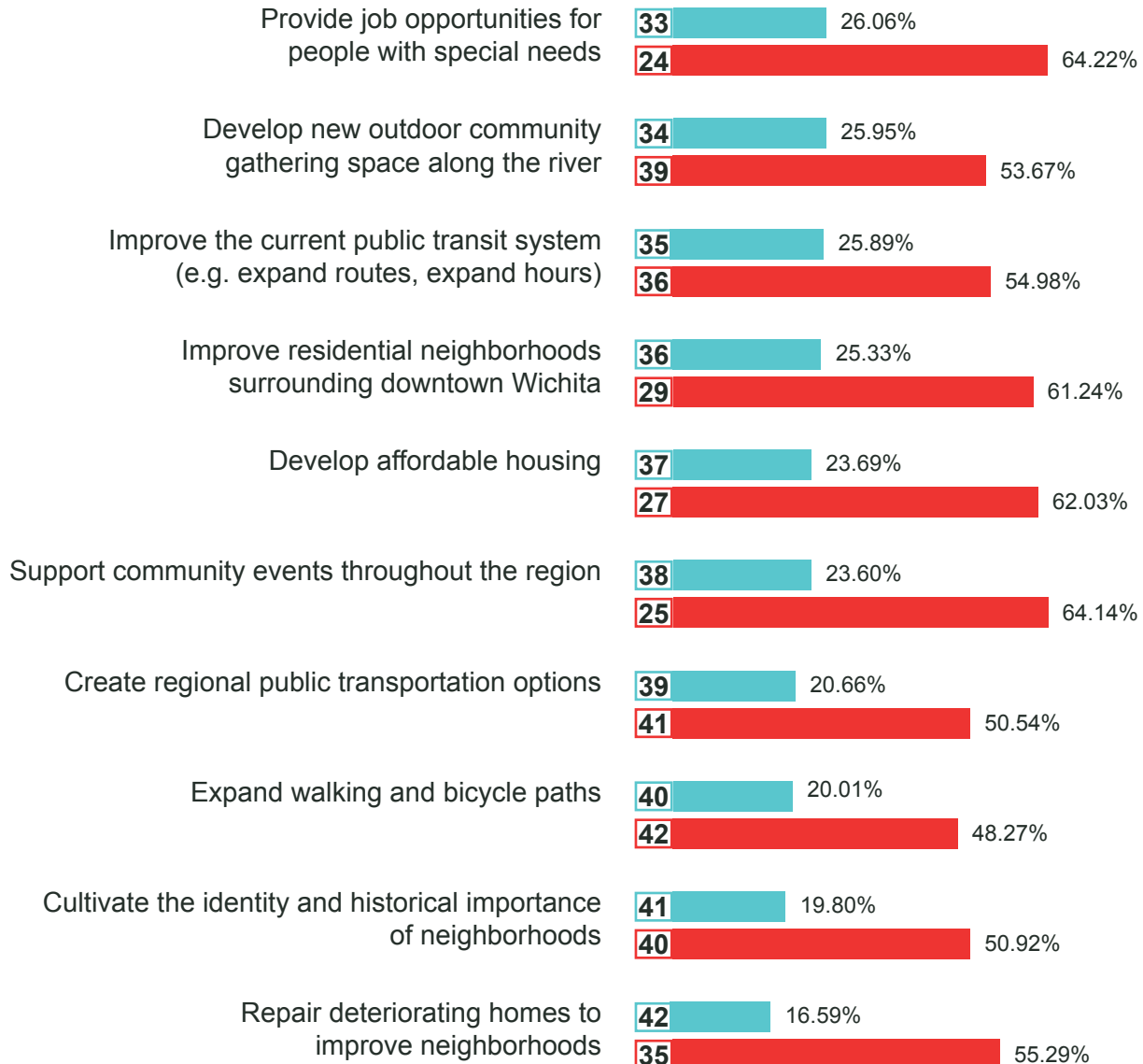


*This data was gathered in a community survey developed by the WSU Public Policy and Management Center in Spring 2018. It represents information and feedback from nearly 14,000 individuals in the Wichita region. The purpose of the survey is to provide community feedback for the creation of a vision and action plan to help the Wichita region thrive.*

## Ranked Strategic Items Key

■ "Essential" Investment Responses    
 ■ "Essential" Investment + "Very Important" Investment Responses (Combined)

"Essential" Investment Ranking — **#** █ % of respondents  
 "Essential" & "Very Important" Investment Ranking (Combined) — **#** █ % of respondents



This data was gathered in a community survey developed by the WSU Public Policy and Management Center in Spring 2018. It represents information and feedback from nearly 14,000 individuals in the Wichita region. The purpose of the survey is to provide community feedback for the creation of a vision and action plan to help the Wichita region thrive.